

# NetEnforcer® AC-2500 Series

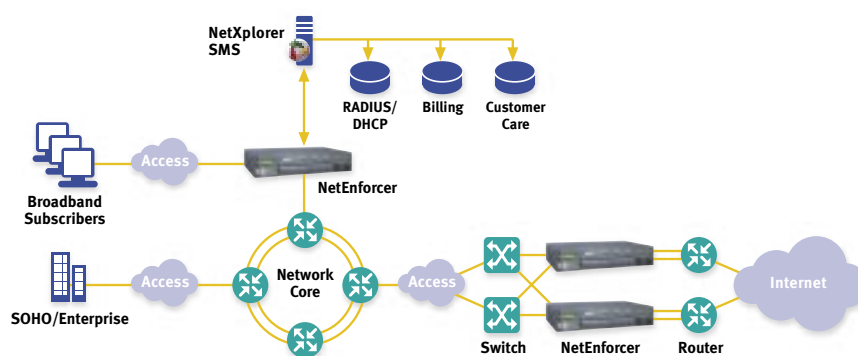
Super Fast 5 Gigabit Traffic Management Devices



The NetEnforcer® AC-2500 series of super fast 5 Gigabit traffic management devices is especially suitable for large broadband service provider networks and carriers. Using deep packet inspection (DPI) technology with QoS enforcement capabilities, they monitor and control network traffic and subscriber behavior, and provide an unsurpassed level of visibility.

## Main Features

- 4 or 8 ports support various network topologies
- Range of operation speeds - 310 Mbps and 1, 2 and 2.5 Gbps (full duplex)
- Accurate identification of hundreds of applications and protocols out-of-the-box
- Advanced signatures and behavioral recognition technologies for individual control of different Internet applications, such as P2P, VoIP, streaming and gaming
- Supported by NetXplorer centralized management system for streamlined global visibility and control, insightful reporting and analysis, and frontline security
- Accurate per subscriber and per application control
- Dynamic provisioning of subscribers and services
- Continuous, easy-to-use traffic monitoring for fast troubleshooting, usage tracking and capacity planning
- Easy upgrading to higher speeds and increases in number of policies using the same platform
- Proactive, automatically-triggered early-warning mechanisms providing administrators with alarms concerning network events and the ability to automate corrective actions
- Detection of traffic anomalies and mitigation of network attacks and security threats by immediate isolation of malicious traffic, without interrupting regular traffic
- Fail-safe performance with external hardware bypass and full redundancy support



# Specifications

The NetEnforcer AC-2500 series is available in two models serving a range of network configurations and needs.

	AC-2520	AC-2540
<b>Capacity</b>		
Number of Connections/Flows	2,000,000 / 4,000,000	
Throughput	5 Gbps (2.5 Gbps, Full Duplex)	
Pipes/Virtual Channels	40,000 / 80,000	40,000 / 80,000
No. of Subscribers	160,000	
<b>Interfaces and Connections</b>		
Management Interface	10/100 BaseT	
Network Interfaces (Internal / External)	4x1000 BaseT or 4x1000 BaseSX or 4x1000 BaseLX	8x1000 BaseT or 8x1000 BaseSX or 8x1000 BaseLX
Console Port	Serial, RJ-45 Connector	
<b>Deep Packet Inspection (DPI) (Typical Examples)</b>		
P2P Protocols	Including BitTorrent, eDonkey, Warez, WinMX, Kazaa	
VoIP Protocols	Including Skype, H.323, SIP, RTP, Net2Phone, Vonage	
Gaming Protocols	Including Doom, Diablo, MSN Game, SWAT, Ultima	
Web/Streaming Application Protocols	Including Abacast, iTunes, RTSP, Winamp MMS	
Traffic Encapsulation Protocols	Including L2TP, MPLS, PPPoE	
<b>Product Options</b>		
Monitoring	Yes	Yes
QoS Enforcement Levels	1 and 2 Gbps (Full Duplex)	310 Mbps and 1/2.5 Gbps (Full Duplex)
Policy Levels (Pipes/VCs)	4,000 / 8,000; 20,000 / 40,000; 40,000 / 80,000	
Redundancy	Serial, parallel and active (1:1, 1+1)	
Add-Ons: NetXplorer Enabler	Yes	Yes
NetXplorer Reporter	Yes	Yes
<b>Dimensions</b>		
Size (H x W x D)	Standard 2U by 19" rack mount	
Weight	9.1 kg (20 lb)	
Bypass Unit	External, 1U, 19" rack mount	
<b>Power</b>		
Input (AC/DC)	100 to 240 VAC, 80 W; -48 VDC, 80 W	
No. Power Supply Units	2 (Load Sharing)	
Redundancy for PSUs	1 + 1	
<b>Safety and Certifications</b>		
Safety	UL 60950-1/ CSA CS22.2 60950 (ITE) EN 60950-1 ITE	
Emission	EN 55024:1994; A1:2001; A2:2003 Immunity for ITE EN 61000-3-2:2001 Harmonic Emissions EN 61000-3-3:1995; A1:2000 Voltage Fluctuations EN 55022:1998; A1:2000; A2:2003 Emissions for ITE VCCI FCC Part 15, Sub-Part B	

## About Allot Communications

Allot Communications is all about broadband traffic management solutions for intelligent networks. Designed for carriers, service providers and enterprises, Allot solutions apply deep packet inspection (DPI) technology to transform broadband pipes into smart networks. This creates the visibility and control vital to manage applications and services, guarantee quality of service (QoS), contain operating costs and maximize revenue. Allot believes in listening to customers, and provides them access to its global network of visionaries, innovators and support engineers.

[www.allot.com](http://www.allot.com) [info@allot.com](mailto:info@allot.com)

- **Americas:** 7664 Golden Triangle Drive, Eden Prairie, MN 55344 USA · Tel: (952) 944-3100 · Toll free: (877) 255-6826 · Fax: (952) 944-3555
- **Europe:** NCI – Les Centres d’Affaires Village d’Entreprises ‘Green Side’ Batiment 7, 400 Avenue Roumanille, BP309, 06906 Sophia Antipolis Cedex, France · Tel: 33 (0) 4-93-001167 · Fax: 33 (0) 4-93-001165
- **Asia Pacific:** 6, Ubi Road 1, Wintech Centre 6-12, Singapore 408726 · Tel: 65 6841-3020 Fax: 65 6747-9173
- **Japan:** Yajima Building, 8F, 7-11-3 Ginza, Chuo-ku, Tokyo 104-0061 · Tel: 81(3) 5537-7114 · Fax: 81(3) 5527-5281 · [www.allot.jp](http://www.allot.jp)
- **Israel:** 5 Hanagar Street, Industrial Zone B, Hod-Hasharon, 45800, Israel · Tel: 972 (9) 7619200 · Fax: 972 (9) 744-3626

